



ELINE BOERMA

YELLOW GALLERY March 2025 Leiden

ELINE BOERMA

Free fall flow, river flow / On and on it goes / Breath under water 'til the end / Yes, the river knows
– Jim Morrison *The Doors*

Eline Boerma's work emerges as a powerful testament to the elemental forces that shape both the natural world and the human psyche. Her paintings, suffused with raw dynamism and energy, evoke the overwhelming intensity of nature in flux. With a visual language that melds the physicality of earth and water, Boerma's compositions feel alive, as though caught mid-transformation. The deep, assertive blues in her palette seem to surge across the canvas, carrying earthen yellows and ochres in their wake, like the tides reshaping a coastline. Her brushstrokes possess a visceral quality, unpredictable yet deliberate, imbuing her work with a sense of controlled chaos.

The atmospheric power of Boerma's paintings invites comparison to the sublime landscapes of J.M.W. Turner, where light and movement render nature both beautiful and terrifying. Yet there is also a Romantic undercurrent reminiscent of Caspar David Friedrich, whose works evoke the existential tension between humanity and the vastness of the natural world. Boerma's paintings have a similarly transcendent quality, drawing the viewer into their depths, as if to assume the role of Friedrich's solitary wanderer, standing on the precipice of the infinite.

While deeply informed by this Romantic lineage, Boerma's work is equally contemporary, forging connections to abstraction through its gestural expressiveness. Her approach recalls Cy Twombly's lyrical handling of line and form, where personal emotion and historical resonance coexist. Like Twombly, Boerma reaches back to the art historical canon, but her focus is the elements themselves, earth, water, light, and air, reimagined through a distinctly modern lens. Her canvases are not mere depictions of nature; they are dynamic sites of transformation, where the forces of creation and erosion, presence and absence, play out in real time.

A striking aspect of Boerma's practice is its exploration of traces—those left behind by the elements and those that inevitably fade away. Her paintings resonate with the rhythms of nature, capturing the ephemeral patterns of wind, the imprint of waves, or the slow, inevitable erosion of stone. These marks are metaphors for the human condition, reflecting the emotional landscapes of our lives. Like the natural world, our inner worlds are shaped by forces both persistent and fleeting; some experiences leave indelible marks, while others are

eroded by time. Boerma's layers of paint reflect this duality, oscillating between presence and erasure, permanence and impermanence.

This thematic depth is underscored by her unique relationship with the water, as Boerma lives on a sailboat. Her intimate daily experience with the tides, winds, and shifting horizons deeply informs her work, lending it an authenticity that goes beyond surface aesthetics. Her art channels this lived connection, transforming it into an evocative exploration of both the physical and the emotional.

Boerma's paintings are thus more than visual representations of natural forces; they are visceral and metaphorical spaces where the cycles of nature and the ebb and flow of human emotion converge. By bridging the Romantic reverence for nature's sublimity with a contemporary abstract sensibility, she offers a new lens through which to experience the interplay of creation, destruction, and renewal. Her work reimagines the sublime not as a distant ideal, but as an intimate, ever-present force, one that shapes our landscapes and our lives in equal measure.



Eline Boerma in her studio

ELINE BOERMA

Back to the stars

Oil and oil stick on canvas

130 x 140 cm | 51,18 x 55,12 in.





ELINE BOERMA

Morning light

Oil and oil stick on canvas

130 x 140 cm | 51,18 x 55,12 in.





ELINE BOERMA

Addicteed to the rush

Oil and oil stick on canvas

110 x 120 cm | 43,31 x 47,24 in.





ELINE BOERMA

Don't forget the rain

Oil and oil stick on canvas

100 x 110 cm | 39,37 x 43,31 in.





ELINE BOERMA

Back to you

Oil and oil stick on canvas

90 x 100 cm | 35,43 x 39,37 in.





ELINE BOERMA

Thorns and petals

Oil and oil stick on canvas

60 x 70 cm | 23,62 x 27,56 in.



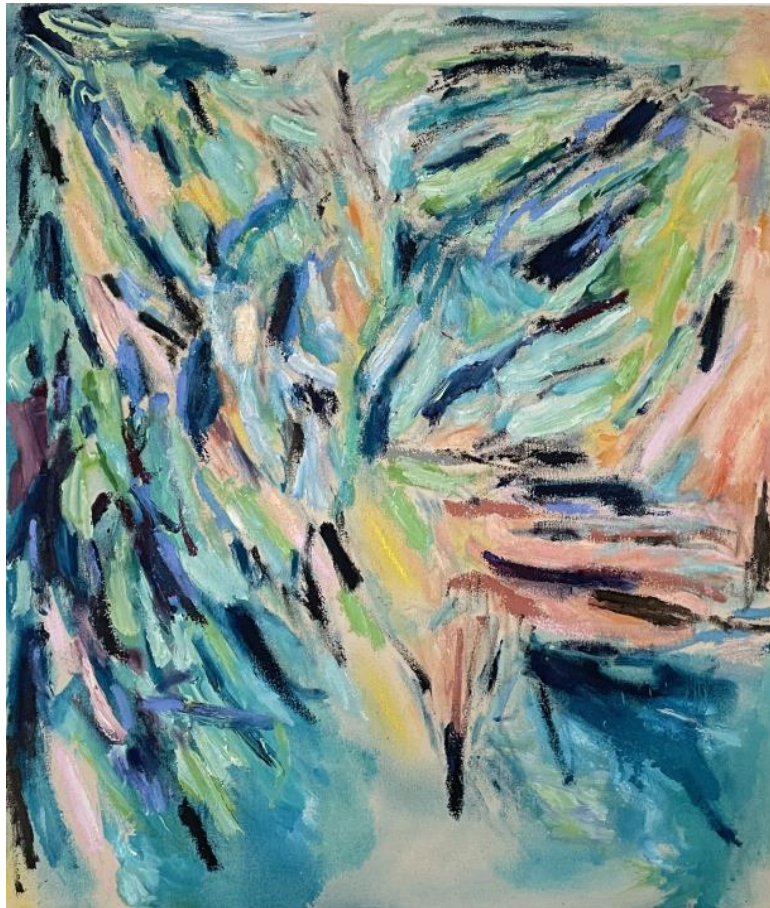


ELINE BOERMA

I open my mouth to speak

Oil and oil stick on canvas

60 x 70 cm | 23,62 x 27,56 in.





ELINE BOERMA

Where I left

Oil and oil stick on canvas
60 x 70 cm | 23,62 x 27,56 in.





ELINE BOERMA

Treeline

Oil and oil stick on canvas
24 x 30 cm | 9,45 x 11,81 in.





ELINE BOERMA

Palm

Oil and oil stick on canvas
30 x 40 cm | 11,81 x 15,75 in.





ELINE BOERMA

BIOGRAPHY

Eline Boerma is a Rotterdam-based artist whose expressive paintings and light installations transform fleeting sensory experiences of wind, water, and waves into immersive artworks. Inspired by moments like sunlight shimmering on water or ripples caused by the wind, Boerma translates these into bold, gestural compositions filled with rhythm and energy.

A graduate of HKU (2022), Boerma's work has been widely exhibited, including solo and group shows at Kers Gallery (Amsterdam), Villazan Gallery (Madrid), and Art Rotterdam. She has received significant recognition, winning the Dooyewaard Stipend (2022) and being nominated for the Royal Award for Modern Painting (2024).

Boerma's art invites viewers to immerse themselves in its vibrant interplay of light, color, and motion, amplifying the transient beauty of nature and its connection to human emotion.



GALLERY INFORMATION

LEIDEN

't Kasteeltje, Leiden
Jan van Goyenkade 44
2311 BC Leiden
+31 6 24 27 49 58
+31 6 54 30 07 06

Opening times:

By appointment

Artworks © Eline Boerma. All rights reserved.
All sales of artworks are subject to YELLOW
GALLERY standard invoice terms and ARR if
applicable.